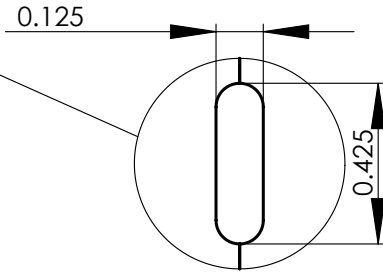
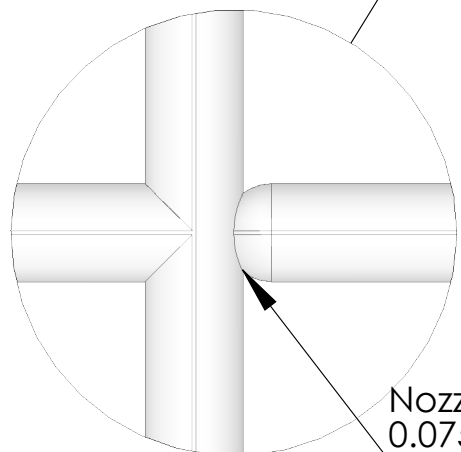
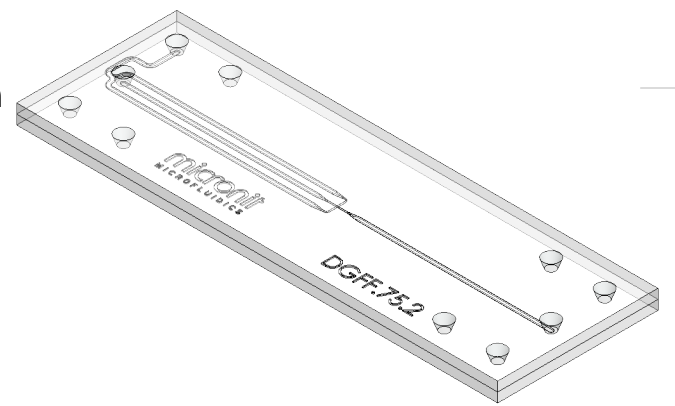


		Length [mm]	#	Volume [μl]
1	Continuous inlet channel	7.75	1	0.39
2	Continuous channel	20.8	2	1.04 (2.07 tot.)
3	Dispersed channel	18.5	1	0.92
4	Outlet channel	18.5	1	0.92

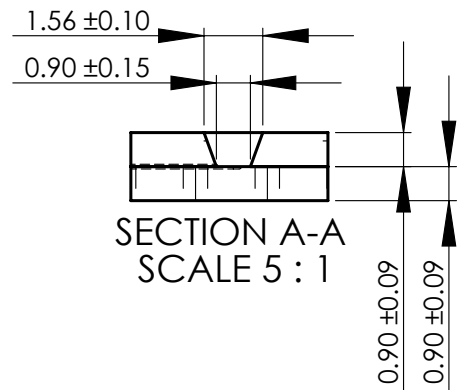


DETAIL B:  
Channel  
cross-section



Nozzle dimensions:  
0.075 x 0.105

DETAIL C  
SCALE 100 : 1



SECTION A-A  
SCALE 5 : 1

<p>THIRD ANGLE PROJECTION</p>	UNLESS OTHERWISE SPECIFIED: DIMENSIONS ARE IN MILLIMETERS			SURFACE FINISH: -	Sheet format: <b>A4</b>	
	SURFACE TREATMENT: -			TOLERANCES: LINEAR: ±. ANGULAR: ±.	DEBUR AND BREAK SHARP EDGES	
DRAWN	NAME	SIGNATURE	DATE	TITLE:		
MOD	BvD		12-5-2016	<b>DGFF.75.2</b>		
CHK'D	WB					
Projectnr. RD0961.002			MATERIAL: Borofloat Glass			
Projectnr. RD0961.002			MATERIAL: Borofloat Glass		DWG NO. <b>DGFF.75.2</b>	REVISION 1
WEIGHT: 2.95			SCALE: 2:1		DO NOT SCALE DRAWING	
					SHEET 1 OF 1	



**PROPRIETARY AND CONFIDENTIAL**  
THE INFORMATION CONTAINED IN THIS DRAWING IS THE SOLE PROPERTY OF MICRONIT MICROFLUIDICS BV. ANY REPRODUCTION IN PART OR AS A WHOLE WITHOUT THE WRITTEN PERMISSION OF MICRONIT MICROFLUIDICS BV IS PROHIBITED.